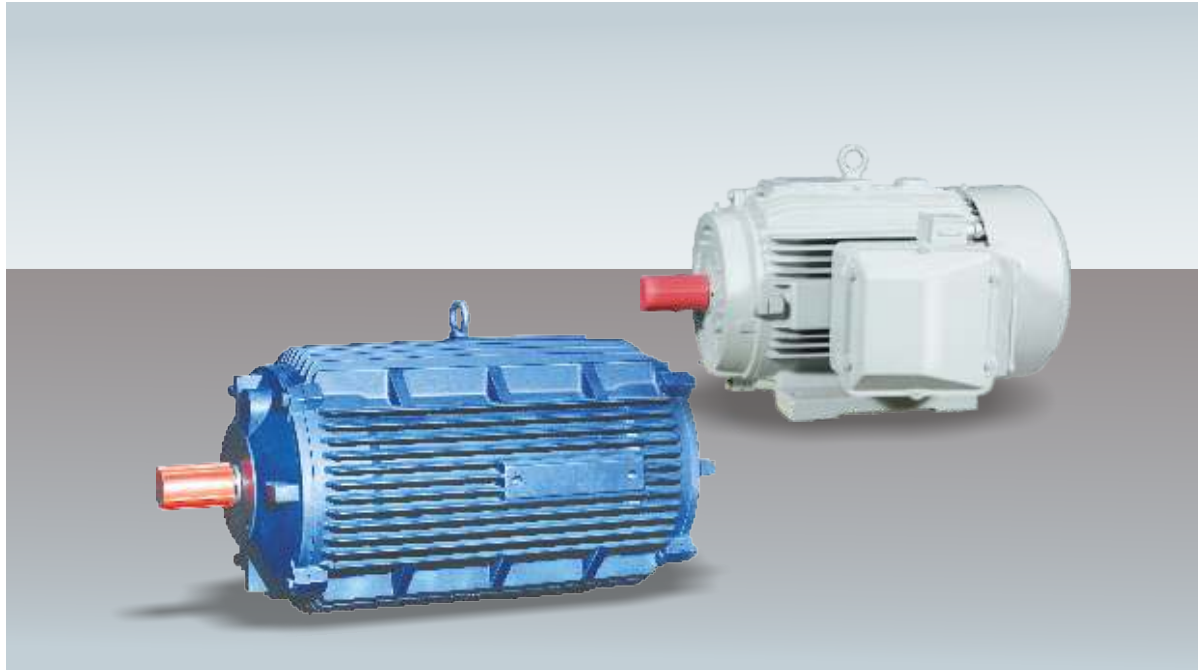


# K-FORCE

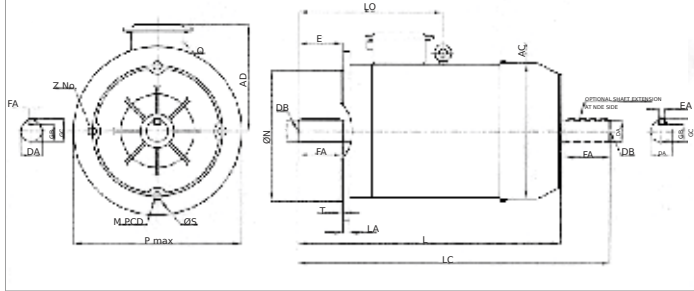
Electric Motors



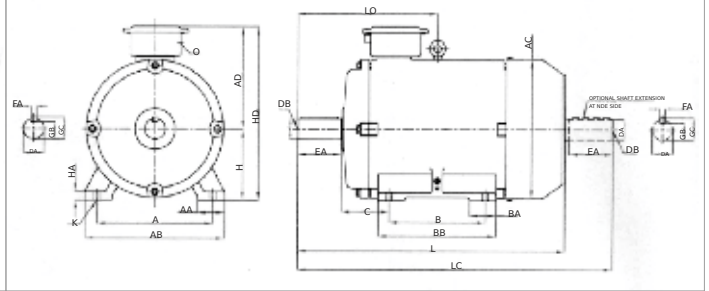
- Range : Up to 37kW / 50HP
- Single phase and Three phase motors
- Insulation class : B, F, H
- Protection : IP55 / IP65
- Sealed bearings and SS hardware
- Well cushioned to absorb voltage fluctuations
- High quality components ensuring high reliability



### Flange mounted (B5) motors



### Foot mounted (B3) motors



### Flange mounted (B5) motors- Technical specifications

Frame size	General Drive End Shaft														Non-Drive End Shaft										
	L	LC	LO	AC	AD	O Cable entry detail	P max	M PCD	ØN	ØS	Z No.	T max	LA	D	DB	E	F	GA	G	DA	DC	EA	FA	GC	GB
63	206	236	-	124	100	1x0.75"	140	115	95	10	4	3	9	11	M4x9	23	4	12.5	8.5	11	M4x9	23	4	12.5	8.5
71	240	276	-	140	105	1x0.75"	160	130	110	10	4	3.5	9	14	M5x12	30	5	16	11	14	M5x12	30	5	16	11
80	277	324	-	158	122	1x0.75"	200	165	130	12	4	3.5	10	19	M6x16	40	6	21.5	15.5	19	M6x16	40	6	21.5	15.5
90S	297	354	-	180	129	1x0.75"	200	165	130	12	4	3.5	10	24	M8x20	50	8	27	20	24	M8x20	50	8	27	20
90L	322	379	-	180	129	1x0.75"	200	165	130	12	4	3.5	10	24	M10x24	50	8	27	20	24	M10x24	50	8	27	20
100L	366	433	-	198	152	2x1"	250	215	180	15	4	4	11	28	M12x28	60	8	31	24	28	M12x28	60	8	31	24
112	389	456	230	222	165	2x1"	250	215	180	15	4	4	11	28	M12x28	60	8	31	24	28	M12x28	60	8	31	24
132S	437	524	257	262	185	2x1"	300	265	230	15	4	4	12	38	M16x32	80	10	41	33	38	M16x32	80	10	41	33
132M	475	562	260	262	185	2x1"	300	265	230	15	4	4	12	38	M16x32	80	10	41	33	38	M16x32	80	10	41	33
160L	620	737	354	311	211	2x1"	350	300	250	19	4	5	13	42	M16x32	110	12	45	37	42	M16x32	110	12	45	37
180L	681	798	381	336	233	2x1"	350	300	250	19	4	5	13	48	M16x32	110	14	51.5	42.5	48	M16x32	110	14	51.5	42.5
200L	760	880	416	395	276	2x2", 1x0.75"	400	350	300	19	4	5	15	55	M20x40	110	16	59	49	55	M20x40	110	16	59	49
225S	835	985	466	435	297	2x2", 1x0.75"	450	400	350	19	8	5	16	60	M20x40	140	18	64	53	60	M20x40	140	18	64	53

### Foot mounted (B3) motors - Technical specifications

Frame size	General Drive End Shaft														Non-Drive End Shaft														
	L	LC	LO	AC	AD	O Cable entry detail	A	B	C	H	K	AA	AB	BB	BA	HA	HD	D	DB	E	F	GA	G	DA	DC	EA	FA	GC	GB
63	206	236	-	124	100	1x0.75"	100	80	40	63	7	27	122	105	27	7	163	11	M4x9	23	4	12.5	8.5	11	M4x9	23	4	12.5	8.5
71	240	276	-	140	105	1x0.75"	112	90	45	71	7	31	134	112	31	8	176	14	M5x12	30	5	16	11	14	M5x12	30	5	16	11
80	277	324	-	158	122	1x0.75"	125	100	50	80	10	32	150	125	32	9	202	19	M6x16	40	6	21.5	15.5	19	M6x16	40	6	21.5	15.5
90S	297	354	-	180	129	1x0.75"	140	100	56	90	10	33	168	124	32	10	219	24	M8x20	50	8	27	20	24	M8x20	50	8	27	20
90L	322	379	-	180	129	1x0.75"	140	125	56	90	10	33	168	149	32	10	219	24	M10x24	50	8	27	20	24	M10x24	50	8	27	20
100L	366	433	-	198	152	2x1"	160	140	63	100	12	43	200	180	46	14	252	28	M12x28	60	8	31	24	28	M12x28	60	8	31	24
112	389	456	230	222	165	2x1"	190	140	70	112	12	49	230	180	47	15	277	28	M12x28	60	8	31	24	28	M12x28	60	8	31	24
132S	437	524	257	262	185	2x1"	216	140	89	132	12	52	256	180	48	16	317	38	M16x32	80	10	41	33	38	M16x32	80	10	41	33
132M	475	562	260	262	185	2x1"	216	178	89	132	12	52	256	218	48	16	317	38	M16x32	80	10	41	33	38	M16x32	80	10	41	33
160L	620	737	354	311	211	2x1"	254	254	108	160	15	64	304	304	60	20	371	42	M16x32	110	12	45	37	42	M16x32	110	12	45	37
180L	681	798	381	336	233	2x1"	279	279	121	180	15	65	335	335	101	24	413	48	M16x32	110	14	51.5	42.5	48	M16x32	110	14	51.5	42.5
200L	760	880	416	395	276	2x2", 1x0.75"	318	305	133	200	19	84	386	365	74	26	476	55	M20x40	110	16	59	49	55	M20x40	110	16	59	49
225S	835	985	466	435	297	2x2", 1x0.75"	356	286	149	225	19	90	428	371	91	28	522	60	M20x40	140	18	64	53	60	M20x40	140	18	64	53

### 3 Phase motors - Technical specifications

Sr. No.	Frame	Rated output (kW)	Rated output (HP)	Speed (RPM)	Current (AMP)	Torque (kgm)	Efficiency (FL)	Power factor (FL)	Approx. Wt. (kg)	Bearing DE	Bearing NDE
1	63	0.18	0.25	2780	0.50	0.06	65.00	0.77	5	6201zz	6201zz
2	63	0.12	0.16	1350	0.52	0.09	56.00	0.57	5	6201zz	6201zz
3	63	0.18	0.25	1360	0.57	0.13	60.00	0.73	6	6201zz	6201zz
4	71	0.37	0.50	2790	0.91	0.13	67.00	0.84	8	6202zz	6202zz
5	71	0.37	0.50	1380	1.05	0.26	66.00	0.74	9	6202zz	6202zz
6	80	0.75	1.00	2845	1.70	0.26	73.50	0.84	13	6204zz	6204zz
7	80	1.10	1.50	2850	2.30	0.38	77.00	0.86	14	6204zz	6204zz
8	80	0.75	1.00	1415	1.75	0.52	74.00	0.81	14	6204zz	6204zz
9	90	1.50	2.00	2860	3.10	0.51	78.50	0.86	19	6205zz	6205zz
10	90	2.20	3.00	2880	4.30	0.74	81.00	0.88	22	6205zz	6205zz
11	90	1.10	1.50	1415	2.50	0.76	81.50	0.85	29	6205zz	6205zz
12	90	1.50	2.00	1420	3.30	1.03	79.00	0.80	20	6205zz	6205zz
13	90	0.75	1.00	925	2.00	0.79	72.00	0.72	18	6205zz	6205zz
14	100	3.70	5.00	2900	7.10	1.24	84.00	0.86	30	6206zz	6206zz
15	100	2.20	3.00	1430	4.40	1.50	82.00	0.85	30	6206zz	6206zz
16	100	1.50	2.00	940	3.50	1.55	76.00	0.78	29	6206zz	6206zz
17	112	3.70	5.00	1440	7.20	2.50	85.00	0.84	37	6206zz	6206zz
18	112	2.20	3.00	945	4.90	2.27	80.00	0.78	39	6206zz	6206zz
19	132	7.50	10.00	2910	13.30	2.51	87.00	0.90	58	6308zz	6308zz
20	132	5.50	7.50	1450	10.60	3.69	87.00	0.83	62	6308zz	6308zz
21	132	7.50	10.00	1450	14.20	5.04	86.50	0.84	71	6308zz	6308zz
22	132	3.70	5.00	950	7.50	3.79	82.00	0.83	55	6308zz	6308zz
23	132	5.50	7.50	950	11.00	5.64	85.00	0.82	68	6308zz	6308zz
24	160	11.00	15.00	2920	20.00	3.67	88.50	0.86	110	6309zz	6309zz
25	160	15.00	20.00	2925	26.50	4.99	89.50	0.88	112	6309zz	6309zz
26	160	9.30	12.50	1455	17.20	6.23	88.00	0.85	105	6309zz	6309zz
27	160	11.00	15.00	1455	20.80	7.36	88.50	0.83	105	6309zz	6309zz
28	160	15.00	20.00	1455	27.00	10.04	89.50	0.86	126	6309zz	6309zz
29	160	7.50	10.00	960	15.00	7.61	87.00	0.80	120	6309zz	6309zz
30	160	11.00	15.00	970	20.50	11.05	88.00	0.84	145	6309zz	6309zz
31	180	18.50	25.00	2930	32.00	6.15	90.00	0.89	165	6310zz	6310zz
32	180	18.50	25.00	1460	34.00	12.34	90.00	0.86	155	6310zz	6310zz
33	180	22.00	30.00	1460	39.00	14.68	90.50	0.87	176	6310zz	6310zz
34	180	15.00	20.00	970	27.50	15.06	89.00	0.85	185	6310zz	6310zz
35	200	30.00	40.00	2950	51.00	9.91	91.00	0.89	260	6312	6312
36	200	37.00	50.00	2950	62.00	12.22	91.50	0.89	275	6312	6312
37	200	30.00	40.00	1465	52.00	19.95	91.50	0.87	255	6312	6312
38	200	18.50	25.00	975	34.00	18.48	90.00	0.84	235	6312	6312
39	200	22.00	30.00	970	40.00	21.98	90.50	0.84	252	6312	6312
40	225	37.00	50.00	1470	64.00	24.50	92.00	0.87	335	6313	6313

# K·FORCE

Electric Motors

## Product offerings

- Motors
- Alternators
- Pumps
- Light fittings



## ***Kind***

Kapsons Industries Ltd.

### **KAPSONS INDUSTRIES LTD.**

GT Road, Suranussi, Jalandhar - 144 027

Punjab, INDIA

Tel. : +91-181-2670900, 2670588,

: +91-181-2670902, 5066308

Fax : +91-181-2671901

E-mail : [info@kapsonsindustries.com](mailto:info@kapsonsindustries.com)

[www.KapsonsIndustries.com](http://www.KapsonsIndustries.com)